

# Classroom News

09/28/2015

**\*\*chelliyoungblood@pickenscountyschools.org \*\* michelemoore@pickenscountyschools.org\*\***  
**\*\*cleshafrazant@pickenscountyschools.org\*\***

## A Peak at the Week

### Reading:

- *Charlie and the Chocolate Factory*
  - *Binder Check for a daily grade will be on Friday.*

### Math:

- **Multi-step word problems:**  
Students will be looking at word problems containing more than one operation.

### Science:

- **Weather:** Students will continue learning about how weather is predicted. They will also become familiar with the tools used to predict weather.

### Social Studies:

- **Native Americans:** Students will continue learning about the Hopi Tribe.

## Important information

### **Fall Break**

We hope everyone will have a restful fall break. Whether you are staying at home or going on vacation, please enjoy your time.

### **Fall Festival**

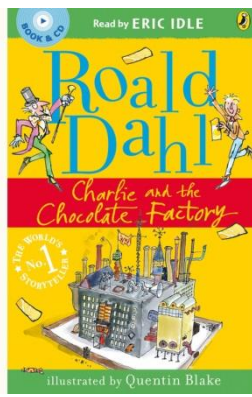
Please join us for an evening full of fun and games. Our annual Fall Festival will be held on October 9<sup>th</sup> from 5:00-8:00 in the old Tate Gym

## Calendar

- 9/21-9/25: Fall Break! No school!
- 10/02/15: TES Spirit Day
- 10/09/15: Fall Festival!

## Upcoming Tests/Homework

- Spelling and Vocabulary Tests will be on October 2<sup>nd</sup>. (*Spelling and Vocabulary words are on the back of this newsletter.*)
- **October 5<sup>th</sup>: Social Studies test on Hopi and Kwakiutl Tribe** (*Study guide sent home on September 28<sup>th</sup>*)



## Meaning and Spelling Vocabulary

Proph e sy (closed, unaccented, open) is a noun that means a prediction of something that will happen in the future. Prophecies are usually associated with religion somehow. A prophet is a person who makes prophecies, but they can also come from priests, depending on the culture.

Pawn shop (vowel team-closed) is a noun that means a business where people can sell things when they need money. If a person needed money in a hurry, he might take something he owned (like a watch or a ring) to a pawnshop. The owner of the shop pays money, but the person has some time to go back and rebuy his item. If he doesn't come back, the pawnshop owner sells it. When you bring something to a pawnshop, you are pawning it.

Fleet (vowel team) is a noun that means a group of ships that are sailing together. We will see that a fleet leaves London in 1606. Only a government or a company can have enough money for a fleet.

Gal lows (closed, vowel team) is a noun that means is a tall wooden frame that has ropes tied to it. The gallows was where a person would be hung by a rope to die for a crime. That was a severe punishment used in the past.

Com mon er (closed, closed, r control) is a noun that means a common person. In colonial times, this was a person without a lot of money or status. They were part of the common people, not the upper class or aristocrats who had money and were served by the commoners.

Dis con tent (closed, closed, closed) is a noun that means not happy or not feeling good. The prefix "dis" means not or the opposite and content means to be happy. The adjective form is discontented. You might feel discontented on days when we have indoor recess.

Sloth ful ness (closed, closed, closed) is a noun that means acting in a very slow, lazy way. The root word is sloth, which is an animal that moves very slowly and seems to be lazy. The suffix "ful" means full of or a lot. The suffix "ness" means how something is or acts. Your mom might get after you if you keep your room a mess and she thinks it is because of your slothfulness. A person can get in trouble for his slothfulness because he is lazy and do not work hard.